

fox trot.premium 1063



Model Code F5522

date of issue 30-05-16 revision 00
revision of 28-09-20 (the present replaces any previous versions)

Designer: Bernard Masson

Structure: pinewood, multilayer and plywood covered with polyurethane foam

Spring system: elastic webbing

Seat Padding: in ecological polyurethane foam covered with 100% polyester padding

Back Padding: in ecological polyurethane foam covered with 100% polyester padding

Removability: not available

Sewing: cuts and sewing on leather covers differ from cuts and sewing on microfiber (or fabric) covers

Standard feet: P633, in pvc h 3 cm.

Please note: the model cannot be produced in leather orion, sorrento, emotion, baby rigato and magù jet. The model is completely finished on each side; each single element is covered also on inner sides.

Density of seat and back

Markets	Seat	Back
I	35 Medium	27
D - NL - CH		
USA - California		
GB	35 fire retardant	25 fire retardant
Others	35 Medium	27

Note: when no values/contents are specified in the chart, please refer to 'Others' field/area.

Coverings

	suggested	not suggested	not possible
thick leathers			✓
thin elastic leathers	✓		
natural leathers	✓		
fabric*	✓		
microfibre*	✓		
leather + split			✓
DeLuxe			✓
multi colour	✓		
multi-category			
multi covering	✓		

Please note: for not removable models, only one colour fabric covers are available.

* fabrics and microfibers are not available for the U.K. market

Available in one cover (entirely in leather, fabric or microfiber), in two-tones (in the same article of fabric or microfiber) = 1st color (fabric or microfiber): frame and rear sides, 2nd color (fabric or microfiber): back and seat cushions; in multi cover (fabric or microfiber/leather) 1st cover (fabric or microfiber): frame and rear sides, 2nd cover (leather): back and seat cushions. The model cannot be produced with thick leather covers.

Multicovering / Components / Optional vers.



1063_M

Feet



P633

Ottoman



With the reservation of carrying for production purposes and without advanced notices modifications on the materials, coverings and dimensions of the product as indicated in the relevant specification. The given dimensions and volume are of indicative value being subject to the production process tolerances.

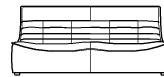
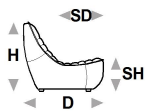


↑ fold following the dotted line ↑

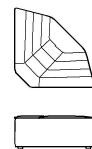
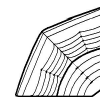
fox trot. premium 1063



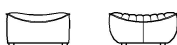
L Length - H Height - D Depth - SH Seat Height - SD Seat Depth
 Dimensions refer to maximum sizes of the version with closed mechanism (where available).



dimensions	L 105 H88 D102 SH40 SD56	L 180 H88 D102 SH40 SD56	L 200 H88 D102 SH40 SD56	L 92 H88 D102 SH40 SD56	L 92 H88 D102 SH40 SD56
version code	100	200	300	110	120
Description	chair	2 seater	3 seater	1 right arm facing chair	1 left arm facing chair



L 60 H61 D74 SH30 SD45	L 81 H88 D102 SH40 SD56	L 160 H88 D102 SH40 SD56	L 81 H88 D162 SH40 SD116	L 115 H88 D115 SH40 SD56	L 101 H40 D101 SH- SD-
AQ3	130	230	400	000	790
baby armless chair	chair without armr.	2 str with no arm.	chaise longue	corner	special ottoman



L 81 H42 D87 SH- SD-	L 52 H42 D87 SH- SD-
635	A93
rectangular ottoman	rectangular small ottoman

↓ fold following the dotted line ↓

